



HID Mobile Access

Business

★★★★☆ 49

How to use HID Mobile ID's

After downloading the **HID Mobile Access APP** and registering the invitation code you should now see your mobile ID on the Home Screen within the APP.

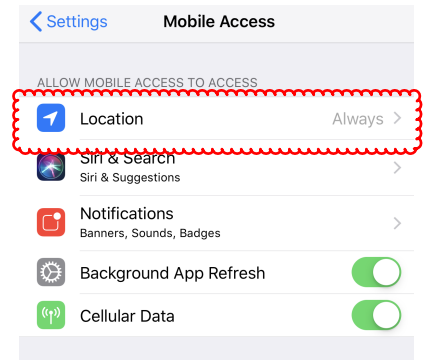
PLEASE MAKE SURE LOCATION SERVICE IS TURNED ON

Within the APP there are a few settings you can personalize under the settings menu.

Allow Mobile Access When:

1. APP is in foreground
2. Device in unlocked
3. Always (if you use always you must turn location service on always)

HID Mobile uses your blue-tooth to communicate with the reader. **Always make sure your blue-tooth is turned on.** Before approaching a reader it is best to have the APP opened and running. If the APP is not running as you approach it can take a few secs to communicate with the reader once it's up and running.



Pedestrian Doors



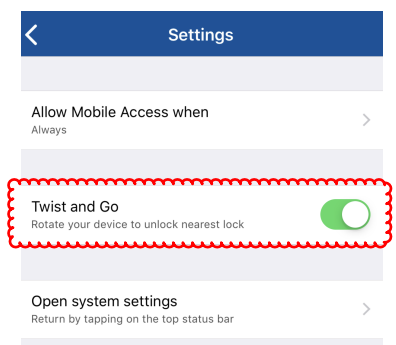
Hold your phone directly up to the reader until access is granted.
(Search " Entry Tech Touch" on YouTube for video)

Vehicle Gates



(Search " Entry Tech Twist" on YouTube for video)

Under the settings menu please make sure you have **turned on the twist and go option.** When approaching a vehicle gate with the APP running. Rotate your phone in a 90 degree direction and back in one continuous motion. Your phone should alert you that it has communicated with the reader.



Android users may need to restart phone after all steps are taken. Please make sure location service is turned on within the Android APP preferences. (this setting is found on the device itself not in the HID APP). Also turn on NFC for improving Touch. You can also adjust the Blue-tooth strength level in the HID APP.